

15619 MANCHESTER RD.

ELLISVILLE, MO 63011

FOR SALE OR
LEASE



15619 Manchester Rd.

PROPERTY DETAILS

STEVE BAHN

314.503.7601 (CELL)

314.849.5858 (OFFICE)

Steve@bahnrealty.com

NICK BAHN

314.322.2020 (CELL)

314.849.5858 (OFFICE)

Nick@bahnrealty.com



- 3,200 SF on 0.4 acres
- Lifts come with building
- Great retail trade area
- 47,000 VPD on Manchester

CALL BROKER FOR PRICING



Stephen F. Bahn Commercial Real Estate . 5024 Griffin Road . St. Louis, MO 63128

The information herein is not warranted although it has been obtained by the owner of the property or from other sources. It is subject to change without notice. Sellers and brokers make no representation as to the environmental or other conditions of the property and recommend that Purchaser investigate fully.



15619 Manchester Rd.

PROPERTY LOCATION

STEVE BAHN

314.503.7601 (CELL)

314.849.5858 (OFFICE)

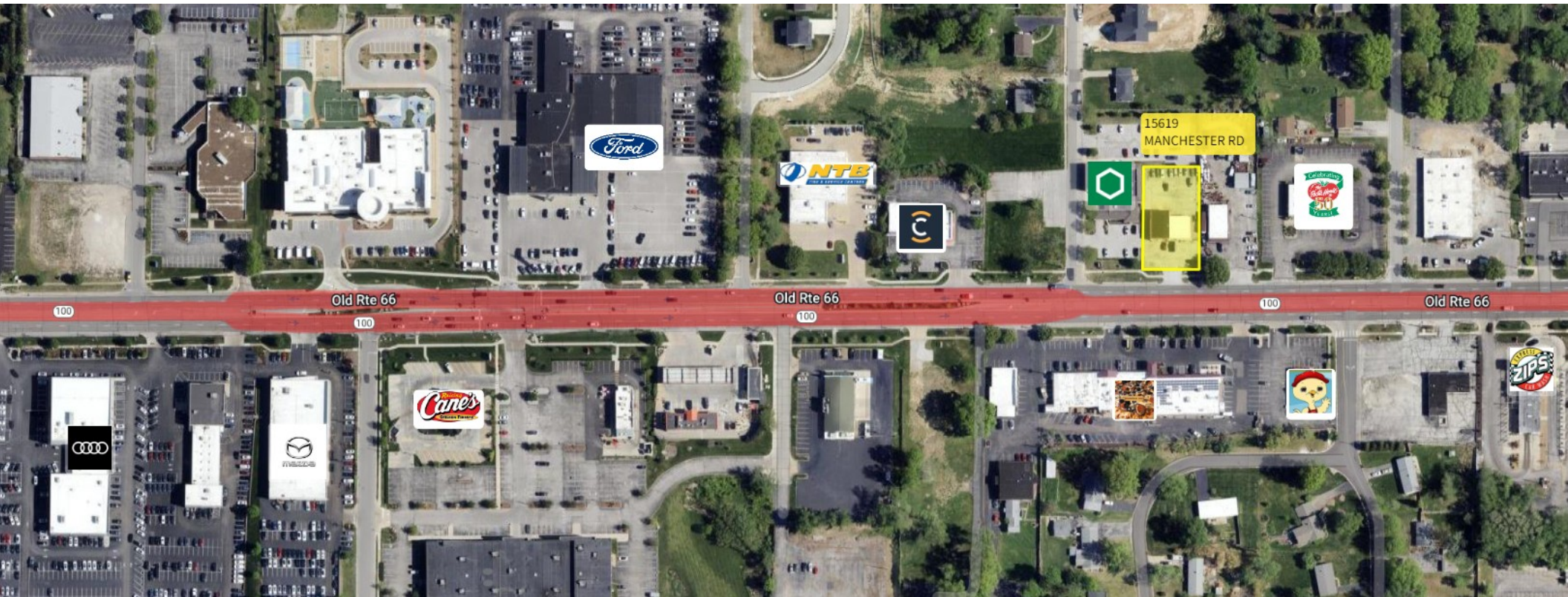
Steve@bahnrealty.com

NICK BAHN

314.322.2020 (CELL)

314.849.5858 (OFFICE)

Nick@bahnrealty.com



Stephen F. Bahn Commercial Real Estate . 5024 Griffin Road . St. Louis, MO 63128

The information herein is not warranted although it has been obtained by the owner of the property or from other sources. It is subject to change without notice. Sellers and brokers make no representation as to the environmental or other conditions of the property and recommend that Purchaser investigate fully.

