

FOR SALE
1933 UNION RD.
St. Louis, MO 63125

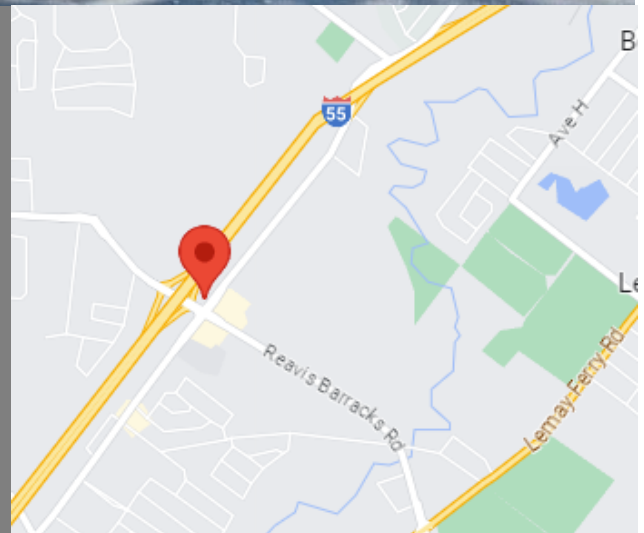
STEPHEN F.
BAHN
COMMERCIAL REAL ESTATE SERVICES



1933 Union Road

St. Louis, MO 63025

- 1,856 SF office building on 0.55 acres
- Overhead door in rear to convert to warehouse
- Zoned C2
- RE Taxes: \$6,906
- Great location with easy access to I-55
- Fantastic owner/user property



FOR SALE: \$399,999.00

FOR MORE INFORMATION

Nick Bahn

Nick@bahnrealty.com

314.322.2020

STEPHEN F.
BAHN
COMMERCIAL REAL ESTATE SERVICES

5024 Griffin Road | St. Louis, MO 63128 | P: 314.849.5858 | F: 314.849.6047 www.BahnRealty.com

The information herein is not warranted although it has been obtained by the owner of the property or from other sources. It is subject to change without notice. Sellers and brokers make no representation as to the environmental or other conditions of the property and recommend that Purchaser investigate fully.

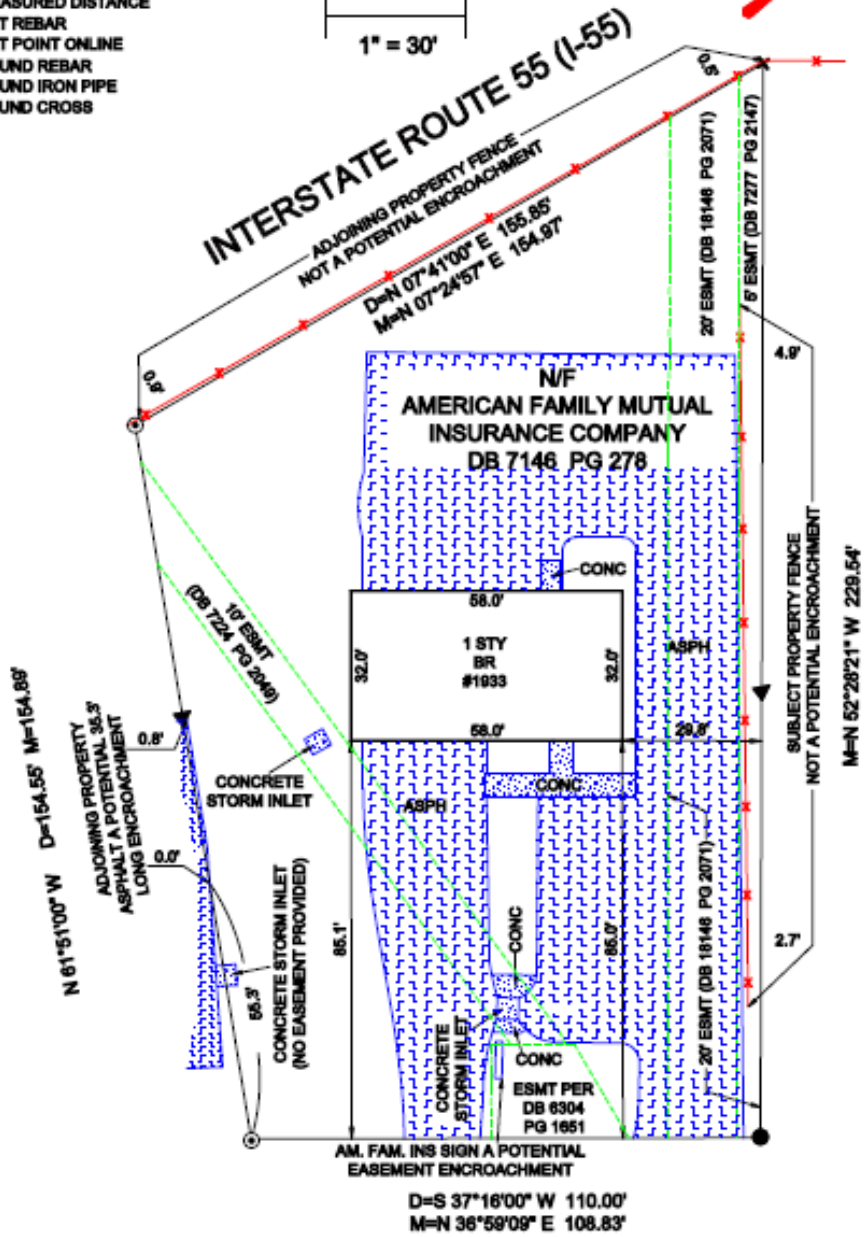




PART OF LOT 1 OF THE SUBDIVISION OF THE VIERLING ESTATE ST LOUIS COUNTY, MO

- D DEEDED DISTANCE
- M MEASURED DISTANCE
- SET REBAR
- ▲ SET POINT ONLINE
- FOUND REBAR
- ⊗ FOUND IRON PIPE
- + FOUND CROSS

1" = 30'



UNION ROAD (80' W)

SHEET 1 OF 2

**CARDINAL
SURVEYING & MAPPING**

PO BOX 278
COTTEVILLE, MO 63338

PHONE: (636) 922-1001
FAX: (636) 922-1002

FIELD WORK BY:
TAO/TJO

DRAWN BY:
JLK

CHECKED BY:
WJC

JOB # 1201024
FB 184:36

This is to certify that on Jan 12th, 2012 a request by Investors Title Company was made for a Boundary Survey and to locate the improvements on the above named tract and that the results are, to the best of my knowledge, correctly represented on this drawing.
LS# 2002014101

