

2726 S. BRENTWOOD BLVD.

St. Louis, MO 63144

**For Lease: \$14.00/PSF
Modified Gross**



**3,300 SF Office Space
Ample Parking**



2726 S Brentwood Blvd

PROPERTY DETAILS

STEVE BAHN

314.503.7601 (CELL)

314.849.5858 (OFFICE)

Steve@bahnrealty.com

NICK BAHN

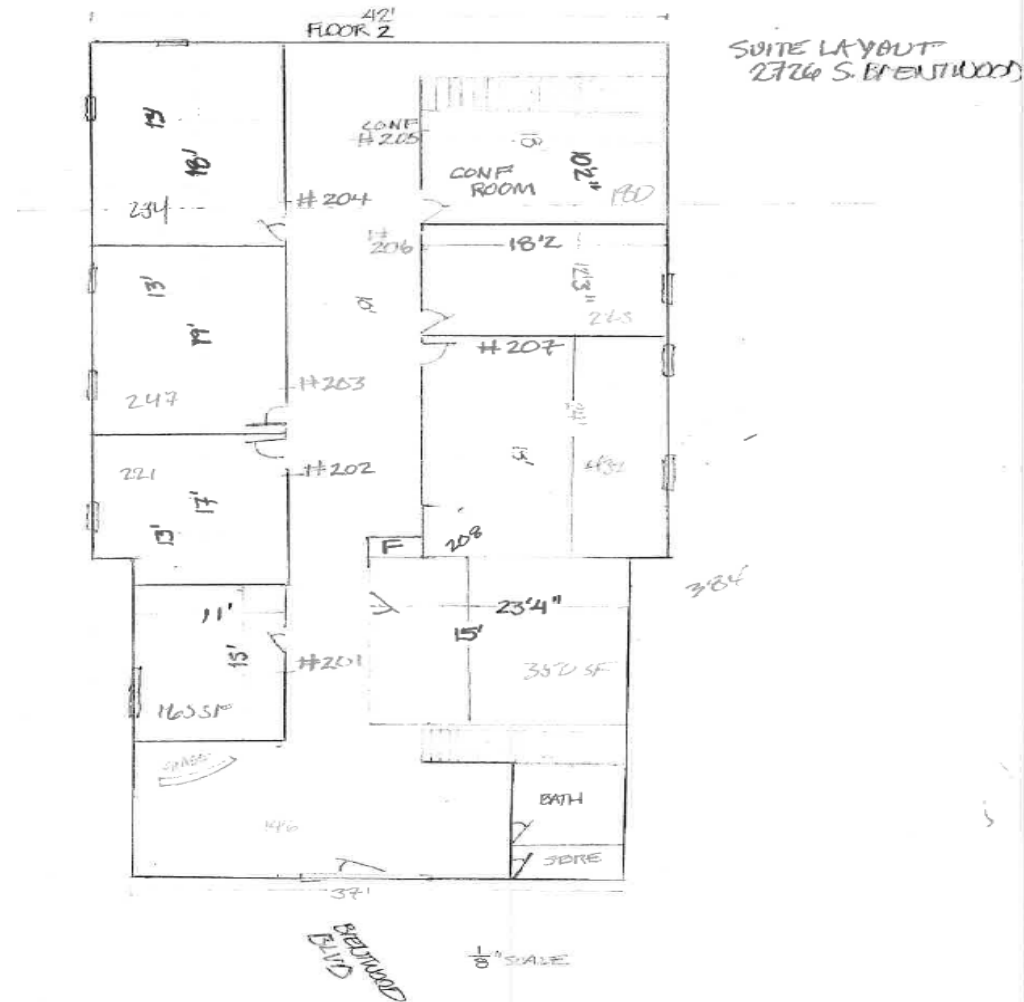
314.322.2020 (CELL)

314.849.5858 (OFFICE)

Nick@bahnrealty.com



- 3,300 SF of first floor office space
- Located just south of Manchester Rd. on Brentwood Blvd.
- 23 parking spaces in rear
- Common areas completely renovated
- Ideal office space for CPA, attorney or small business
- Great exposure on Brentwood Blvd.
- Individual suites available from 150 SF



Stephen F. Bahn Commercial Real Estate . 5024 Griffin Road . St. Louis, MO 63128

The information herein is not warranted although it has been obtained by the owner of the property or from other sources. It is subject to change without notice. Sellers and brokers make no representation as to the environmental or other conditions of the property and recommend that Purchaser investigate fully.



2726 S Brentwood Blvd

PROPERTY DETAILS

STEVE BAHN

314.503.7601 (CELL)

314.849.5858 (OFFICE)

Steve@bahnrealty.com

NICK BAHN

314.322.7601 (CELL)

314.849.2020 (OFFICE)

Nick@bahnrealty.com



Stephen F. Bahn Commercial Real Estate . 5024 Griffin Road . St. Louis, MO 63128

The information herein is not warranted although it has been obtained by the owner of the property or from other sources. It is subject to change without notice. Sellers and brokers make no representation as to the environmental or other conditions of the property and recommend that Purchaser investigate fully.

