



FOR SALE OR LEASE

FOR MORE INFORMATION

Nick Bahn
Nick@bahnrealty.com
314.322.2020

Steve Bahn
Steve@bahnrealty.com
314.503-7601

5757 SOUTH LINDBERGH BLVD.
ST. LOUIS, MO 63123



5757 SOUTH LINDBERGH BLVD. St. Louis, MO 63123

5757 South Lindbergh is a unique medical office building strategically located on heavily trafficked South Lindbergh Blvd., averaging 45,000 VPD.

Prominently situated in the dense retail corridor of South County, 5757 South Lindbergh is also located near Mercy Hospital.

The size of the building provides the opportunity for a single user to capitalize on the property's high exposure, signage and branding.

Property Features

- 18,120 SF
- 1.67 acres
- Elevator served
- Across the street from Kloss Furniture
- Down the street from the new Tesla dealership
- 68 Car parking
- Strategically located on South Lindbergh Blvd. with 45,000 VPD
- Easy access to 270 and 55. Located near South County Center, Mercy Hospital, Schnucks, Dierbergs, and Fresh Thyme Market

Space

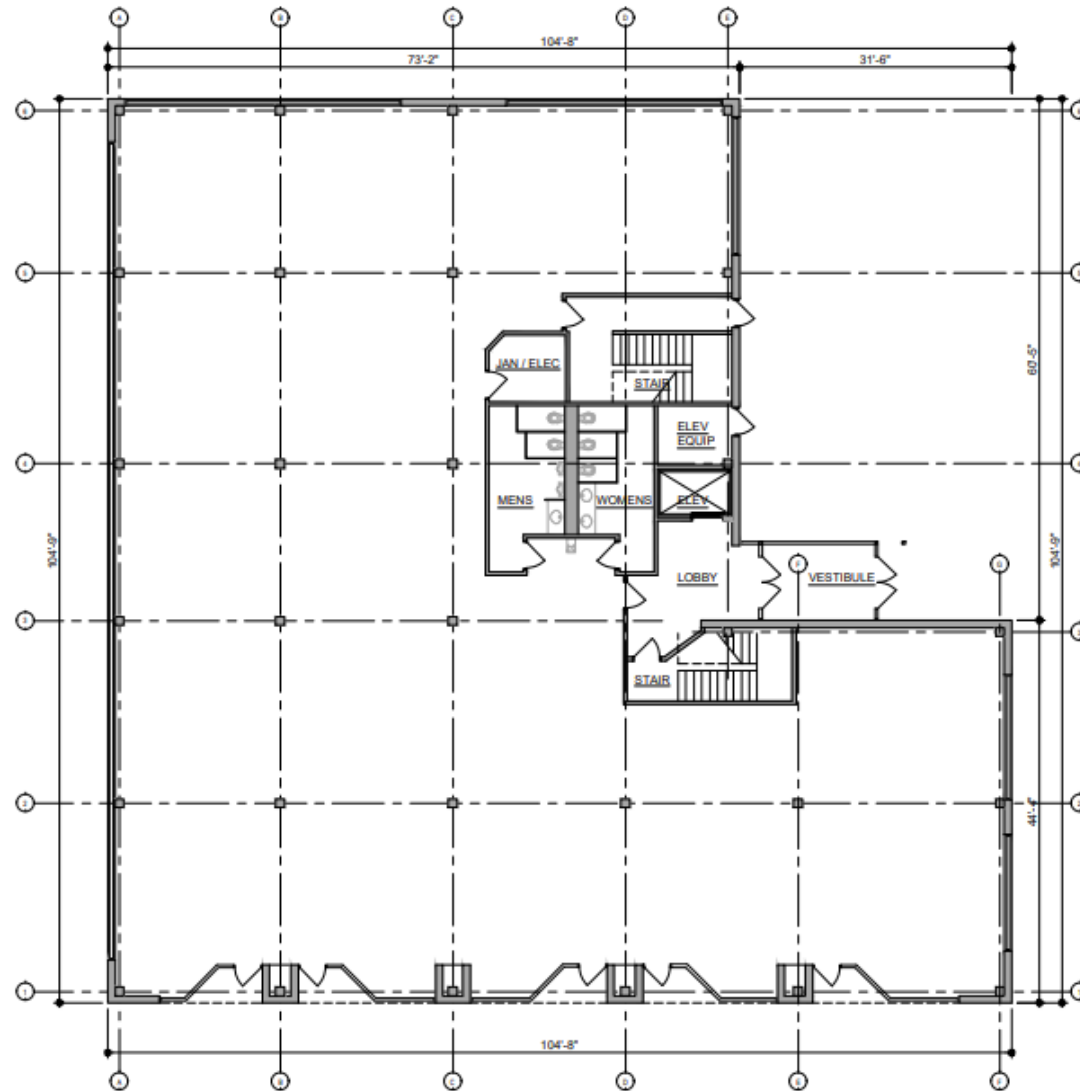
1st Floor: 9,060 SF

2nd Floor: 9,060 SF

Sale price: \$1,795,000.00

Lease price: \$20.00 SF NNN





Building Area:

1st Floor: 9,060 Gross SF

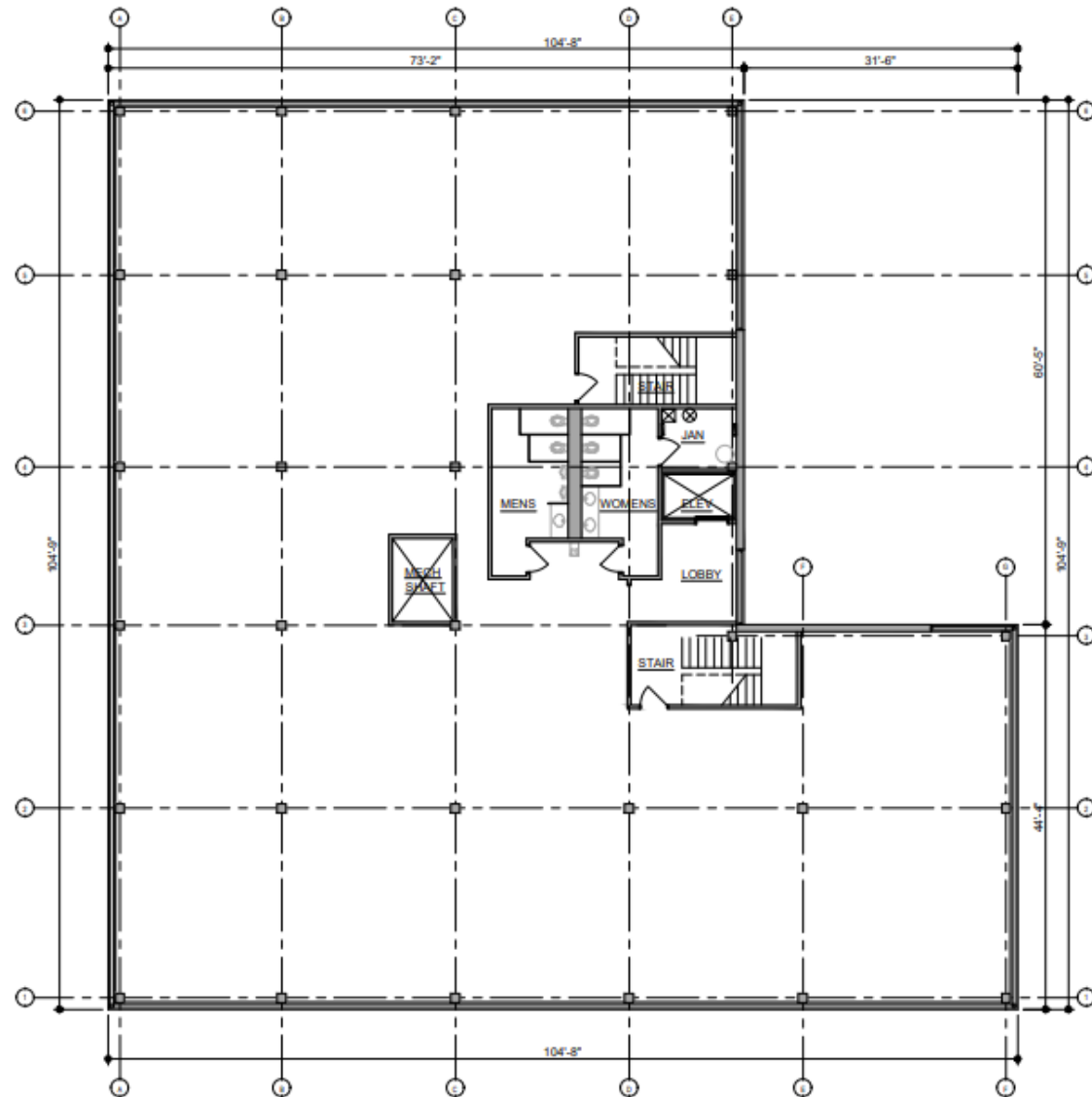
2nd Floor: 9,060 Gross SF

=====

Total: 18,120 Gross SF



EXISTING 1st FLOOR PLAN



Building Area:

1st Floor: 9,060 Gross SF

2nd Floor: 9,060 Gross SF

=====

Total: 18,120 Gross SF



EXISTING 2nd FLOOR PLAN

SCALE: 1/16" = 1'-0"









