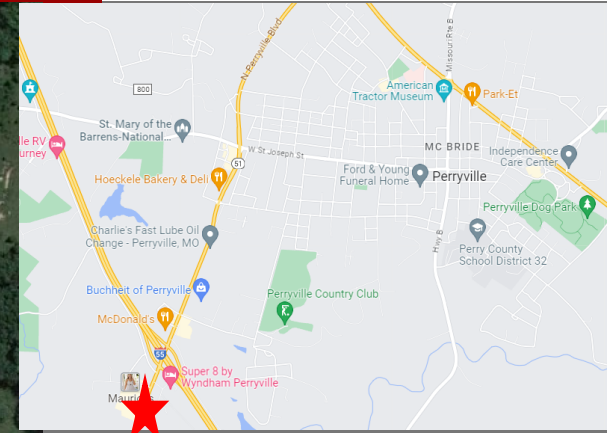
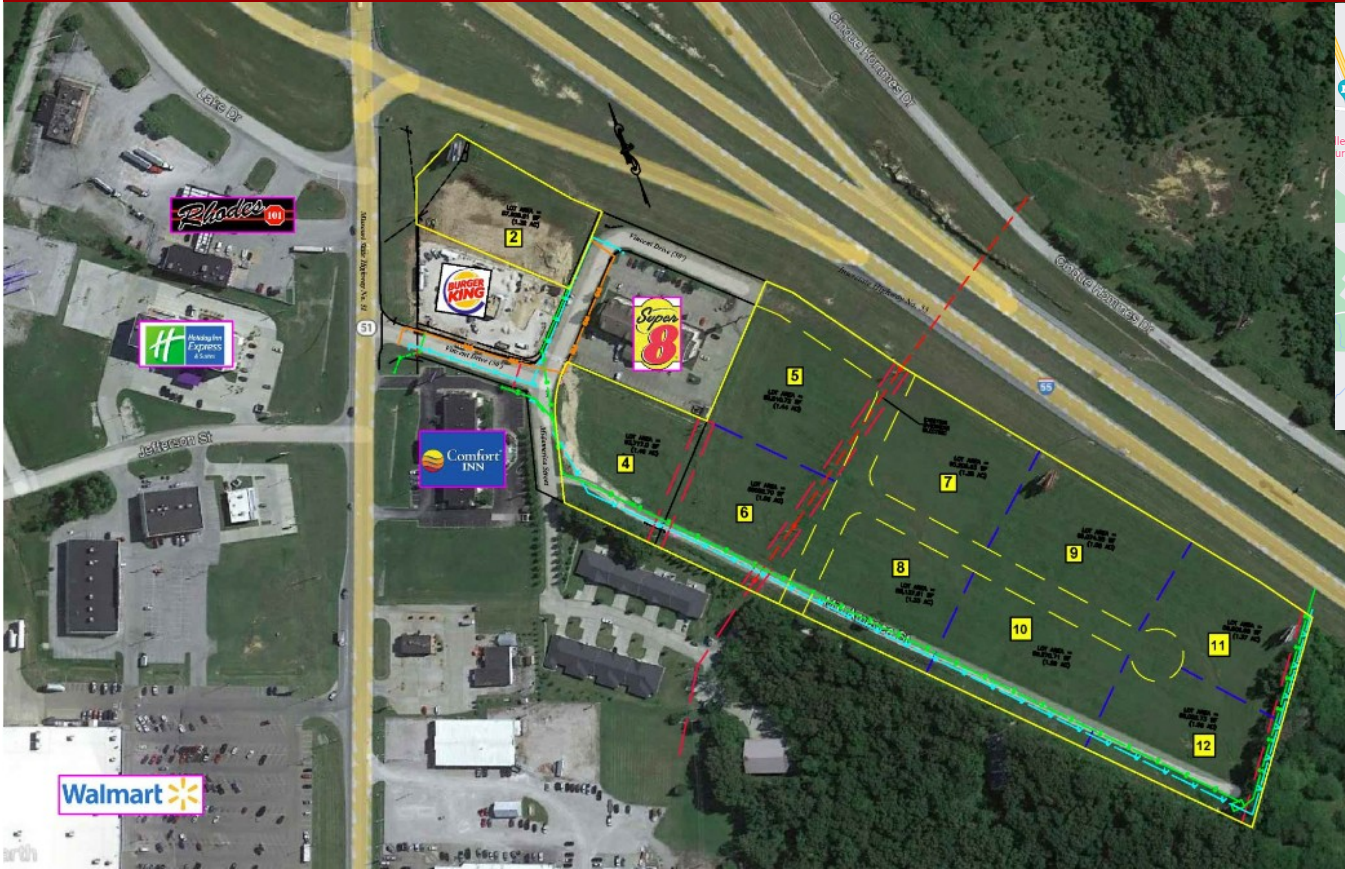


PERRYVILLE, MO OUTLOT/ PAD OPPORTUNITIES



PROPERTY FEATURES

- I-55 Frontage
- 1 - 14 acres
- All utilities available
- 1 hour from St. Louis County
- County seat is located in Perryville

CALL BROKER FOR PRICING

FOR SALE

FOR MORE INFORMATION

Steve Bahn
Steve@bahnrealty.com
314.503.601

Nick Bahn
Nick@bahnrealty.com
314.322.2020



Lot 2

Lot 4

Lot 5

Lot 6

Lot 7

Lot 8

Lot 9

Lot 10

Lot 11

Lot 12

51

INTERSTATE
55

S. Perryville Blvd.

Rhodes
PHARMACEUTICAL STORES

IMO'S

Holiday Inn
Express

BURGER
KING

Super 8
BY WYNDHAM

QUALITY
INN & SUITES

Arby's

SUBWAY

STIHL

KELLER
COMMERCIAL REAL ESTATE

at&t

VAPOR
MAVEN

Walmart