

1410 PROGRESS PKWY

UNION, MO 63084



1410 PROGRESS PKWY

PROPERTY DETAILS

STEVE BAHN

314.503.7601 (CELL)

314.849.5858 (OFFICE)

Steve@bahnrealty.com

BRIAN MCCUNE

314.276.5493 (CELL)

314.849.5858 (OFFICE)

Brian@bahnrealty.com

- **Lot Size:** 1.0-acre corner lot adjacent to Express Mart c-store currently under construction
- **Location:** Strategic corner of Denmark Rd & Progress Pkwy in a growing commercial corridor near East Central College
- **Nearby Retailers:** Walmart, ALDI, Arby's, Dairy Queen, Scooter's Coffee, Burger King, BriteWorX, ACE Hardware, AT&T, Tractor Supply Co
- **Traffic Counts:** 6,684 vehicles per day on Hwy 50
- **Utilities:** All utilities to site
- **Zoning:** B2



Stephen F. Bahn Commercial Real Estate . 5024 Griffin Road . St. Louis, MO 63128

The information herein is not warranted although it has been obtained by the owner of the property or from other sources. It is subject to change without notice. Sellers and brokers make no representation as to the environmental or other conditions of the property and recommend that Purchaser investigate fully.



1410 PROGRESS PKWY

PROPERTY DETAILS

STEVE BAHN

314.503.7601 (CELL)

314.849.5858 (OFFICE)

Steve@bahnrealty.com

BRIAN MCCUNE

314.276.5493 (CELL)

314.849.5858 (OFFICE)

Brian@bahnrealty.com



Stephen F. Bahn Commercial Real Estate . 5024 Griffin Road . St. Louis, MO 63128

The information herein is not warranted although it has been obtained by the owner of the property or from other sources. It is subject to change without notice. Sellers and brokers make no representation as to the environmental or other conditions of the property and recommend that Purchaser investigate fully.



1410 PROGRESS PKWY

PROPERTY DETAILS

STEVE BAHN

314.503.7601 (CELL)

314.849.5858 (OFFICE)

Steve@bahnrealty.com

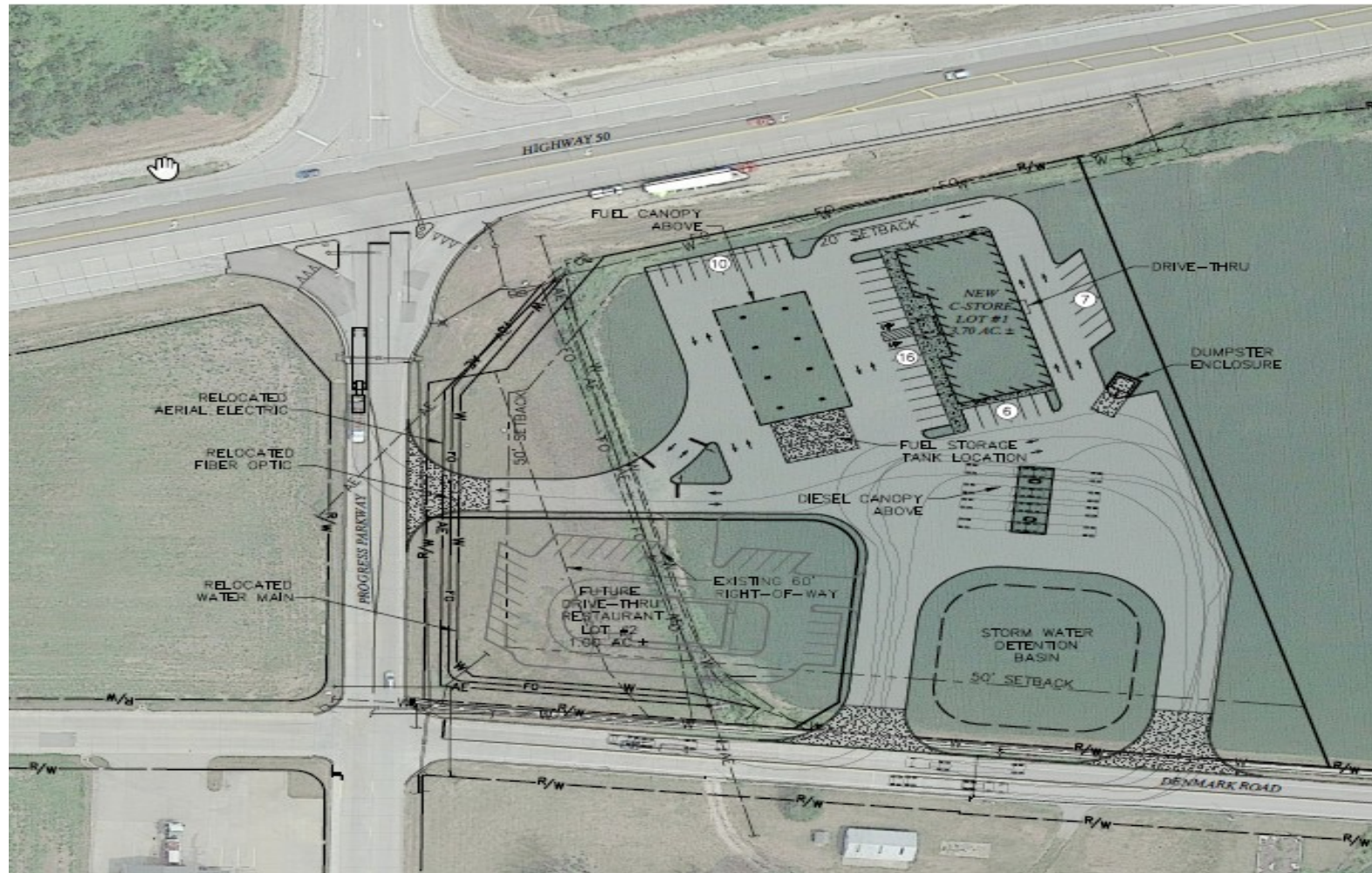
BRIAN MCCUNE

314.276.5493 (CELL)

314.849.5858 (OFFICE)

Brian@bahnrealty.com

CONCEPTUAL SITE PLAN 7.2



Stephen F. Bahn Commercial Real Estate . 5024 Griffin Road . St. Louis, MO 63128

The information herein is not warranted although it has been obtained by the owner of the property or from other sources. It is subject to change without notice. Sellers and brokers make no representation as to the environmental or other conditions of the property and recommend that Purchaser investigate fully.



1410 PROGRESS PKWY

PROPERTY LOCATION

STEVE BAHN

314.503.7601 (CELL)

314.849.5858 (OFFICE)

Steve@bahnrealty.com

BRIAN MCCUNE

314.276.5493 (CELL)

314.849.5858 (OFFICE)

Brian@bahnrealty.com



Stephen F. Bahn Commercial Real Estate . 5024 Griffin Road . St. Louis, MO 63128

The information herein is not warranted although it has been obtained by the owner of the property or from other sources. It is subject to change without notice. Sellers and brokers make no representation as to the environmental or other conditions of the property and recommend that Purchaser investigate fully.

