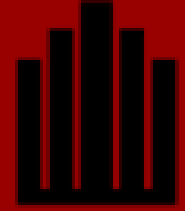


16445 Village Plaza View Dr · Wildwood MO, 63011

FOR LEASE: \$18/SF NNN



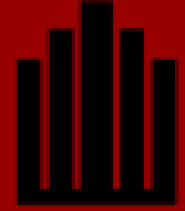
STEPHEN F.  
**BAHN**  
COMMERCIAL REAL ESTATE SERVICES



## PROPERTY HIGHLIGHTS

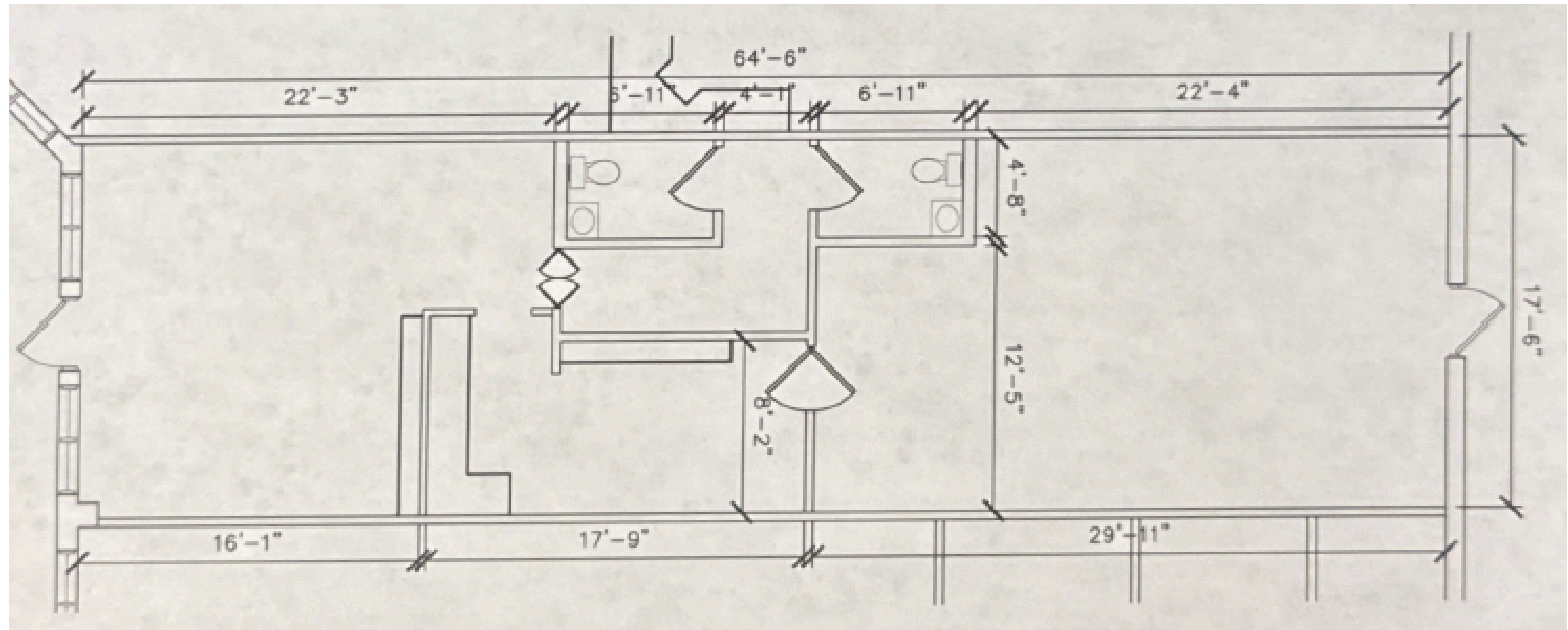
- 1,200 SF fully built-out restaurant space available in Village Plaza
- Second-generation restaurant space featuring a 13' hood, walk-in cooler, reach-in freezer, and 3-compartment sink
- FF&E available, including existing kitchen equipment, prep tables, furniture, and more
- Great location at the signalized intersection of Manchester Rd & Westglen Farms Dr with 30,000+ VPD
- Excellent visibility and access in a high-traffic retail corridor
- Strong demographics within the growing Wildwood submarket surrounded by dense residential communities
- Nearby national and regional retailers including Schnucks, Dierbergs, Home Depot, Kohl's, Dollar Tree, Walgreens, Starbucks, and more



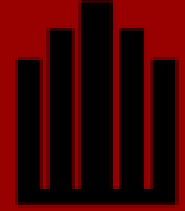


16445 Village Plaza View Dr · Wildwood MO, 63011

# PROPERTY FLOORPLAN

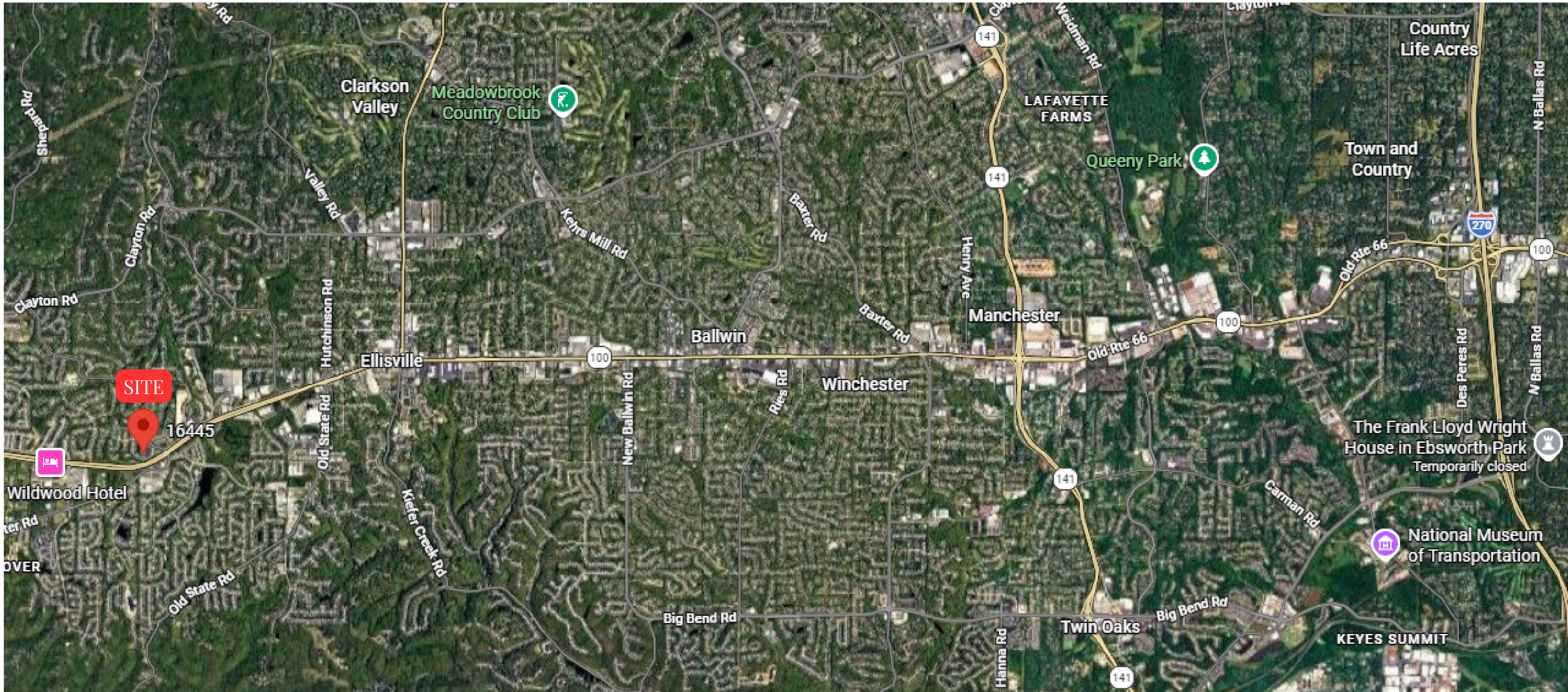




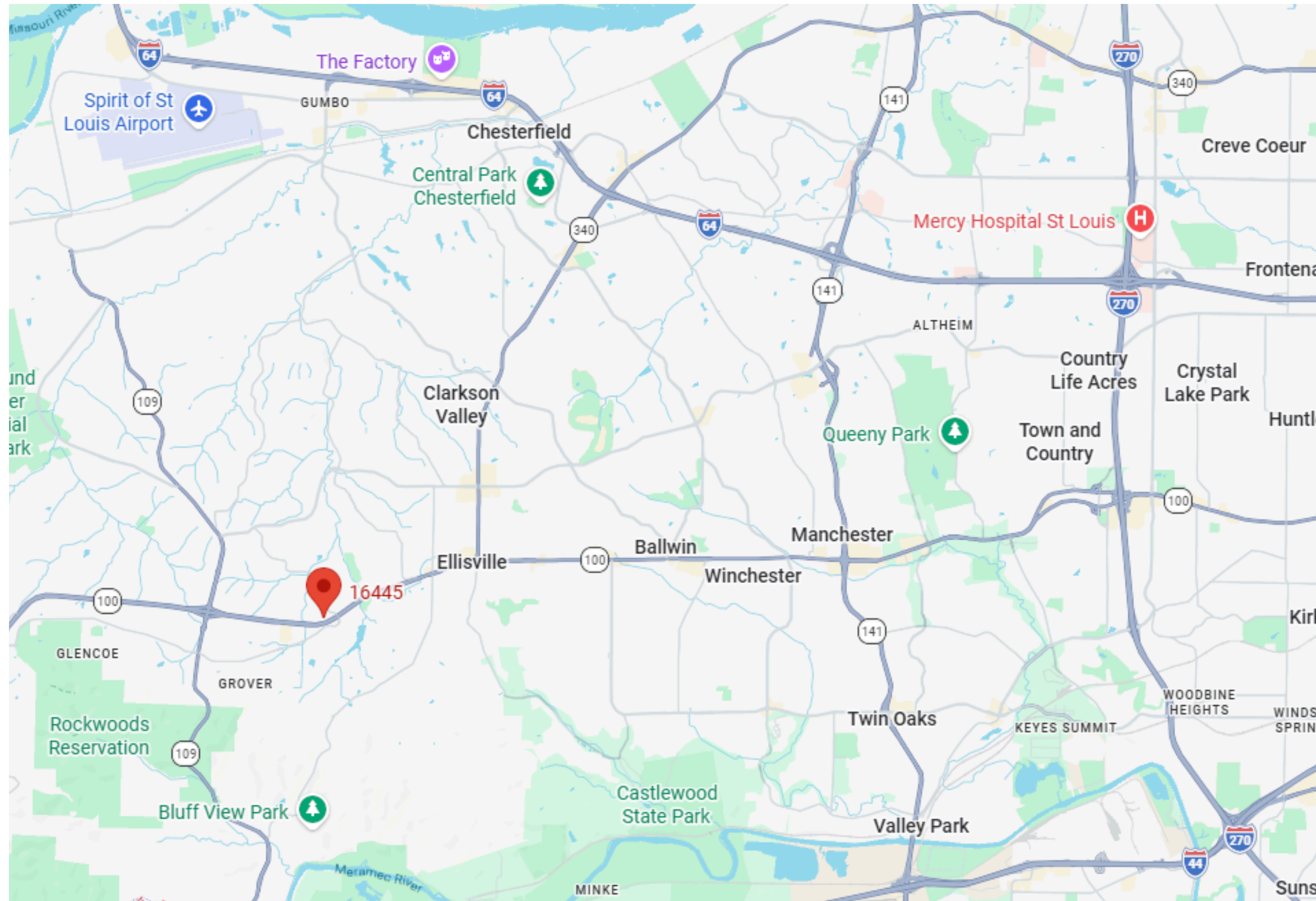


16445 Village Plaza View Dr · Wildwood MO, 63011

## LOCATION



## LOCATION



*Nick Bahn*

Office: 314.849.5858

Cell: 314.322.2020

Nick@bahnrealty.com

*Brian McCune*

Office: 314.849.5858

Cell: 314.276.5493

Brian@bahnrealty.com